



WSU Professional Cooperative Education Program Opportunities with RiverSide Electronics, Ltd.

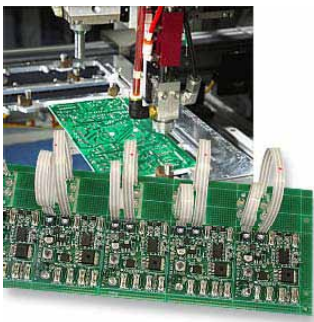


For over 24 years, RiverSide Electronics has provided contract Electronics Manufacturing Services (EMS) to Original Equipment Manufacturers (OEMs) who demand the highest level of quality, service, and value. RiverSide specializes in low to medium volume, high-mix, electronics manufacturing - from printed circuit board assemblies to electro-mechanical assemblies and box build.

RiverSide Electronics provides its customer base flexible, responsive service from product design through field return management. As a full service contract manufacturer, we provide specialty services including but not limited to box build, functional test development, ROHS manufacturing, and ruggedized electronics. Our customers are in a variety of industries including power management, medical device, agricultural equipment, off-road equipment, industrial controls, appliance, and computer/communications. Please visit our website for more information: <http://www.rellew.com/>

Requirements

Application to the Professional Cooperative Education Program at RiverSide Electronics is open to all WSU full time students taking a minimum of 12 credit hours per semester. Students will be required work 10-20 hours per week during the school year between the hours of 7am-6pm, Monday through Friday. There is also a three day/week minimum. Working during the summer is also a requirement, but students will have the option of working up to 40 hours per week. Students are allowed up to one month of unpaid vacation during either the summer or winter breaks. It is also very important that students have reliable transportation to get to and from work.



Applicants must be in good academic standing with the university and have 2 years of school remaining. Applicants must be willing to commit to working at RiverSide Electronics for those 2 years.

After acceptance into the program, applicants will have the opportunity to select 1 of 2 different experience paths. Those interested in the business and operations path will have an opportunity to work in departments such as: Production Operations, Customer Operations, Purchasing, Materials, Information Systems, and Human Resources. Those students who are interested in a more technical path will have the opportunity to work in departments such as: Test Engineering, Process Engineering, Industrial Engineering, Quality Engineering, and Manufacturing Engineering.

How to Apply

If you are interested in applying to the WSU Professional Cooperative Education Program at Riverside Electronics please submit the following no later than September 9, 2009:

- WSU Professional Cooperative Education Program Application
- Resume

Submit to: Jenny Lamberson
WSU Outreach & Continuing Education Department
Somsen 106
PO Box 5838
Winona, MN 55987

Questions may be directed to 507-457-2963 or coop@winona.edu



**OUTREACH AND
CONTINUING EDUCATION**
WINONA STATE UNIVERSITY

