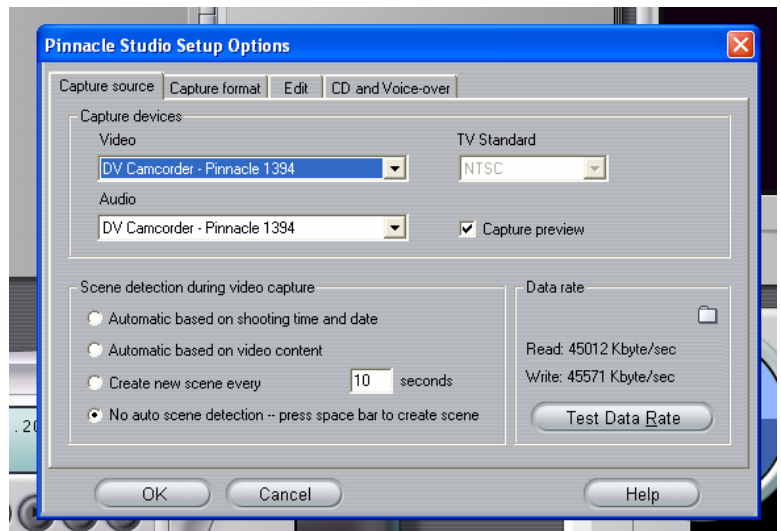
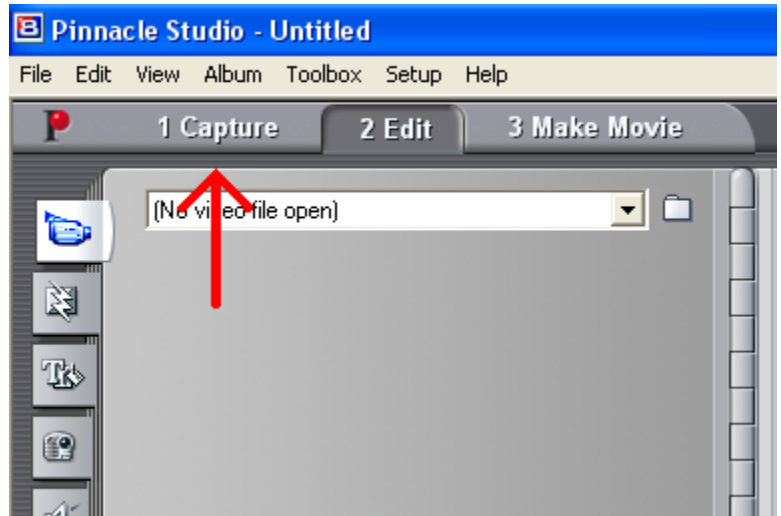


Instructions for ADVC-100 Converter (PC)

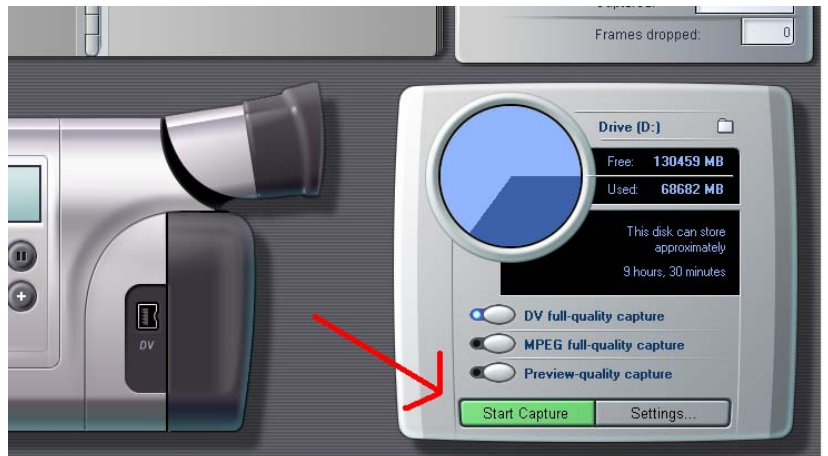
Importing VHS to Pinnacle Studio 8:

Insert a video tape into the VCR, and make sure the channel is set to “L1”, and the ADVC-100 is set to “Analog In”.

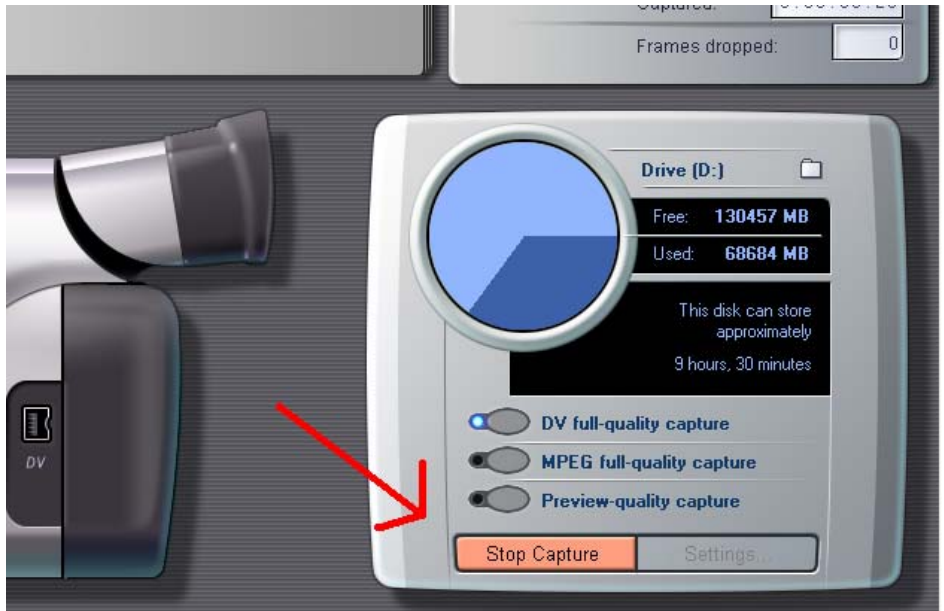
Open Pinnacle Studio 8, and click on “1 Capture”. Click on “Settings”, then the “Capture Source” tab to make sure the Capture Source is set to “DV Camcorder – Pinnacle 1394”, and click OK. Also, click on the folder icon to make sure the footage is being saved on your personal folder on drive D.



Cue the video tape several seconds before the point you want to start capturing, and press Play on the VCR, then immediately after, press “Start Capture”.



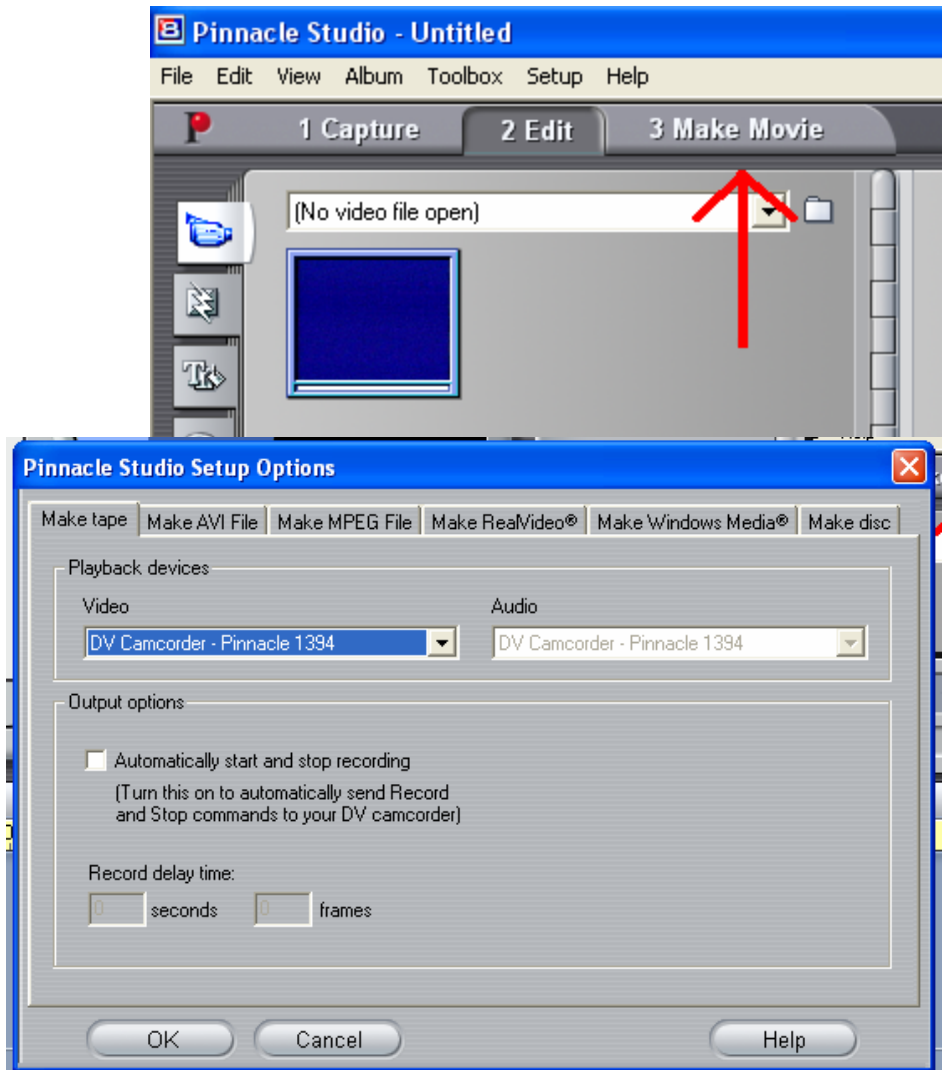
When you are finished importing, just press “Stop Capture” and Stop on the VCR.



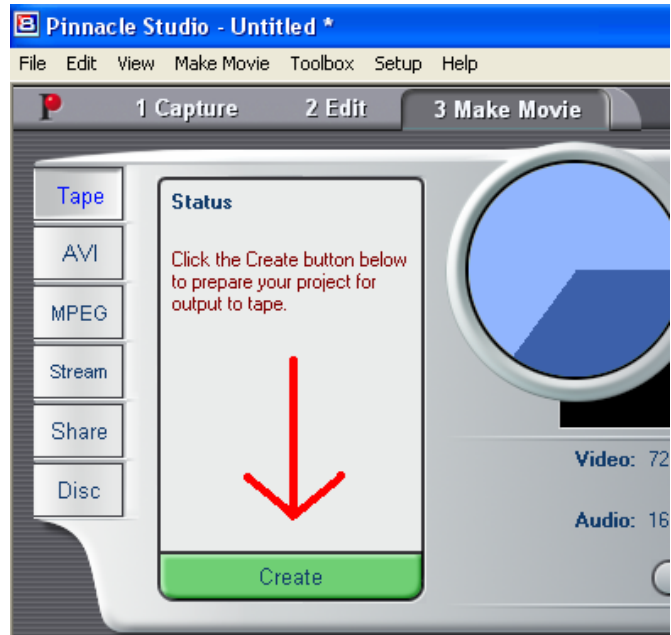
Exporting to VHS using Pinnacle Studio 8:

Insert the video tape on which you want to record into the VCR, and set the channel to “L2”, and the ADVC-100 to “Digital In”.

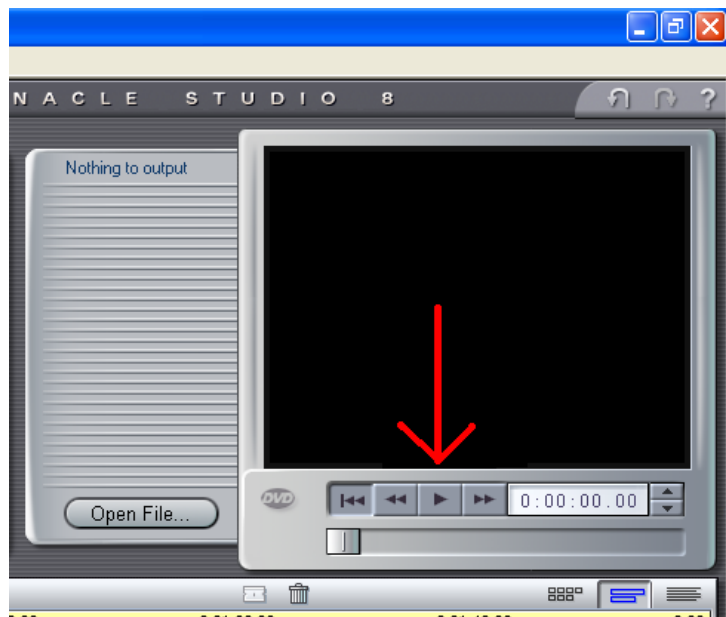
In Studio 8, click on “3 Make Movie”. Click on “Settings”, and click on the “Make Tape” tab, and make sure the Video is set to “DV Camcorder – Pinnacle 1394”.



Click “Create”, and the program will render the output file. This may take a few minutes, depending on the length of the movie.



Once it is finished rendering, press Record on the VCR and immediately after, press Play in Studio 8. Your movie should show up on the TV screen.



Once your movie is finished playing, press Stop on the VCR. Rewind the tape and play it to make sure your movie was recorded.