




Newsletter and Schedule

January – February, 2012

<p>Learning Club Steering Committee Contact Information</p> <p>Chair: Patte Peterson pattep@hbc.com</p> <p>Vice Chairs and Curriculum Committee Chairs:</p> <p>Bob Raz bojjean@hbc.com</p> <p>Ray Brooks rjbrooks@hbc.com</p> <p>Secretary: Peggy Carroll pegc@hbc.com</p> <p>Membership/Hospitality Chair: Mary Jane Sobeck 454-2094</p> <p>Publicity Chairs:</p> <p>Eileen Amundson eamund@hbc.com</p> <p>Carole Stever carolestever@charter.net</p>	<p>WSU Learning Club</p>  <p>the learning club Learning in Retirement</p> <p>Winona State University WSU Retiree Center</p> <p>WSU Liaison:</p> <p>Ann Kohner, Interim Director akohner@winona.edu</p> <p>Nancy Amann, Office Manager namann@winona.edu</p>	<p>The Learning Club Mailing Address:</p> <p>Winona State University WSU Retiree Center P.O. Box 5838 Winona MN 55987</p> <p>Location: 1st floor/ WSU Alumni House 227 West Seventh Street Corner of Winona & Wabasha Streets</p> <p>retiree@winona.edu</p> <p>http://www.winona.edu/retiree</p> <p>507-457-2331</p>
---	---	--

We strongly encourage you to sign up for classes early as room capacity may necessitate capping attendance.

Go green - The Learning Club Newsletter is available on-line the 15th of even months
www.winona.edu/retiree
(click The Learning Club on the left navigation bar)
Print your own copy

Save trees - receive an email copy

Sign up - 457-2331

How to Register for Classes and Events:

1. **Phone:** call 507-457-2331
2. **Email:** retiree@winona.edu
3. **By Mail:** The Learning Club, c/o WSU Retiree Center, PO Box 5838, Winona, MN 55987
4. **In Person:** WSU Retiree Center located on the 1st floor of the WSU Alumni House, 227 West 7th Street (Corner of Winona & Wabasha Streets). Parking is available in the back.

All classes/events that have a fee are required to be paid in advance of the deadline indicated (by mail or in person as indicated above). Reservation for the class/event is not secured until payment is received.



NEW GENERATION FOODS

Nancy Jensen, of the WSU Department of Health, Exercise and Rehabilitative Science, will discuss Functional Foods – nutraceuticals, phytochemicals, probiotics and zooneutrients. Learn about where these "new" food properties are found, how science and marketing are modifying the food supply and sample a few of the natural and fortified foods containing functional properties.

Date: Tuesday January 10, 2012

Time: 10:00 am

Location: Winona County History Center

WONDERS OF TURKEY

Journey with Harry and Ormsin Gardiner as they share their exploration of the history and culture of Turkey. It begins with arrival in Istanbul and visits to the Blue Mosque, Hagia Sophia and Topkapi Palace followed by a cruise on the Bosphorus and shopping in the famous Grand Bazaar with its vast array of antiques,



brassware, and carpets. After a drive to the World War I battlefields of Gallipoli, a sea crossing is made from the European continent to Canakkale in Asia and the ancient cities of Troy, Pergamon, and the port of Izmir, overlooking the Aegean Sea. A visit to the spectacular ruins of Ephesus is followed by a drive to Pamukkale, famous for its chalk-white limestone terraces, Konya, the old capital of the Anatolian Empire and home of the mystic Whirling Dervish sect. After an excursion to Cappadocia and Goreme, a region of volcanic landscapes and a tour of the underground city of Kaymakli, arrive in the country's capital, Ankara, and visit the Hittite Museum and the mausoleum of Ataturk, Turkey's greatest modern leader. A scenic drive through the countryside to Istanbul allows a visit to the popular spice Market and return to the United States.



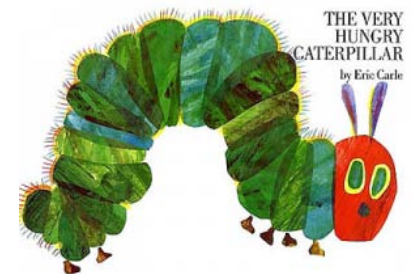
Date: Wednesday January 18, 2012

Time: 10:00 am

Location: Winona County History Center

CREATING CHILDREN'S BOOKS AROUND THE WORLD

Anne Pellowski grew up on a farm between Dodge and Arcadia. After graduating from the College of St. Teresa, she received a Fulbright to the University of Munich, Germany and the International Youth Library there, for research into international children's literature. She then completed her Master's in Library Science at Columbia University in New York, worked 10 years for the NY Public Library, 16 years for the U.S. Committee for UNICEF, and 12 years as a consultant to UNICEF, UNESCO, the World Council of Churches and many other international organizations. Since her retirement in 1997, she has spent her time doing volunteer workshops in countries that have few or no children's books, helping them make books in their local languages. This is done in conjunction with the organization known as IBBY, the International Board on Books for Young People.



Date: Thursday January 19, 2012

Time: 10:00 am

Location: Winona County History Center

JULIUS CAESAR: HIS LIFE, ACHIEVEMENTS, AND PLACE IN HISTORY

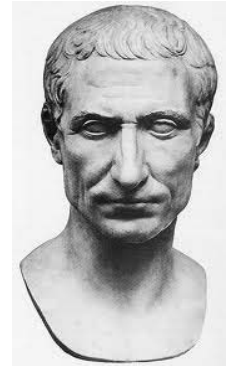
Julius Caesar was the foremost figure of his age. He was a general, statesman, orator, writer, and politician. His career took him from the conquest of Gaul to the dictatorship of Rome. Was Caesar a reformer or a tyrant? What was his impact on the future history of Rome?

Norm Sobiesk is a frequent speaker for our Learning Club and never fails to bring us an informative and educational program. Sign up early for another "wowing" presentation by Norm.

Date: Monday January 23, 2012

Time: 1:00 pm

Location: Winona County History Center



ENERGY MEDICINE/BODY, MIND, & SPIRIT

What can it do and how does it work? This session will cover the basic philosophy of energy medicine (an alternative medicine) and how it differs in philosophy from the conventional, allopathic medicine (body as a machine vs. living system of energy fields). Of the many energy modalities the presentation will include meridians, chakras, acupoints, homeopathic, hands-on healing, and energy psychology. The presentation will include a few demonstrations.

Elmer Mattila is a retired community college math, physics, and computer teacher. He is currently a practitioner-apprentice in a Healing Touch International program.

Date: Thursday February 2, 2012

Time: 10:00 am

Location: Winona County History Center

LEARNING CLUB FEBRUARY OPEN HOUSE

The WSU Flute Choir is a group of WSU students under the direction of Professor Sharon Martin. Different group members play piccolo, 1st, 2nd, and 3rd flute, alto flute, and bass flute. (Did you know that there is more than one kind of flute?) The group plays many different kinds of music, ranging from classical to ragtime and jazz. In addition to performing for us, the choir will answer questions we may have about the flute as a musical instrument.

Date: Monday February 6, 2012

Time: 12:30 p.m. Social Period

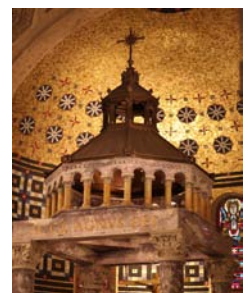
1:00 p.m. WSU Flute Choir

1:45 p.m. Brief Business Meeting

Location: Winona County History Center, Wanek Hall

TOUR – CHAPEL OF SAINT MARY OF THE ANGELS

The Chapel of Saint Mary of the Angels, a sacred place of worship in Winona since 1925, is also an architectural and artistic jewel of Winona. The Chapel is built in Northern Italian Romanesque style, including arches, clerestory windows, a Campanile and Rose window. The interior is noted for its mosaic designs, stained-glass windows, seven types of Italian marble, gold-leafed accents, and more. In keeping with its name, an angel motif is prominent throughout the Chapel.



This program will include a brief history of the Chapel, a guided tour of prominent architectural, artistic, and symbolic features, and several musical selections played on the Chapel organ by Nancy Edstrom Bachler.

Date: Thursday February 9, 2012

Time: 1:00 pm

Location: 1155 W. Wabasha Winona, MN; Meet at Chapel of Saint Mary of the Angels

Guide: Ann E. Gibson, Ed.D.

Refreshments will be provided after the program at CStea House across Gould Street from the Chapel.

Parking is available in the Cotter lot at Seventh and Vila Street (360 Vila).

AMERICAN MUSIC



Dr. Donald Lovejoy of the Winona State University music department has a deep interest in American music and has therefore carefully considered its special characteristics. What makes American music American? Does American music have distinctive qualities that make it different from the music of other nations? Could a musical work like Aaron Copeland's Appalachian Spring have been written by anyone other than an American? Come and hear Dr. Lovejoy's thoughts on such questions.

Date: Monday February 20, 2012

Time: 1:00 pm

Location: Winona County History Center

The Learning Club ...within the CLUB schedules

MYSTERY READERS BOOK CLUB

The Mystery Readers Book Club meets on the 4th Tuesday of every month at Callista Court. Members read any work by the author chosen for the month. To begin discussion one member gives a biographic summary of the author and information about his/her work.

Date: Tuesday January 24, 2012; Author: Jim Butcher (Dresden files)

Tuesday February 28, 2012; Author: Jane Langton

Time: 10:30 am

Location: Callista Court - 1455 West Broadway



STORYTELLING GROUP

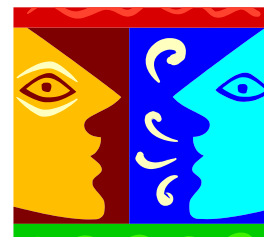
September to May - **Meeting Date:** 3rd Wednesday of the Month

Dates: Wednesday January 18, 2012

Wednesday February 15, 2012

Time: 1 pm

Location: WSU Retiree Center, WSU Alumni House, 227 West Wabasha.



Visitors or participants are always welcome.

Parking is available in the driveway behind the Alumni House and the front door is handicap accessible. New members are welcome to come and listen or participate by telling a short story.

Leaving a Legacy: Writing a Personal Journal

Carol Galbus, English Professor Emeritus

By recalling times/events in our lives and deciding which we wish to share, we will commit to writing about these bits of nostalgia and share with class members in order to stimulate more ideas and enthusiasm for continuing to do so. We may examine outside writings/writers to help us recall and write clearly. Much writing and sharing will be done!

Tuesdays, January 10, 17, 24, 31; 1:00 – 2:30 p.m.
(limited to 10 students)
Maxwell 257

Ancient Creation Myths

Emilio DeGrazia, English Professor Emeritus

A study of creation myths as scripted in Mesopotamian, Greek/Roman, and Hebrew texts. Various interpretive models to be considered.

Thursday, February 9, 16, 23, March 1, 8; 2–3:30p.m.
Maxwell 257

Architectural Monuments of the Western World

Dominic Ricciotti, Art Professor Emeritus

Each lecture in the five week series is devoted to a different architectural monument representative of its era: The Parthenon, Chartres Cathedral, St. Peter's Basilica, The U.S. Capitol Building, and the Woolworth Building. Of concern is the building's style and meaning. Sculpture made for each structure and how it relates to its purpose or function is also explored.

Tuesdays, March 27, April 3, 10, 17, 24; 1:00-3:00 p.m.
Maxwell 257

Aldo Leopold's Legacy: The Conservation Ethic

Bruno Borsari, WSU Biology Professor, Tex Hawkins and Eric Nelson, retired U.S. Fish and Wildlife Service; Joe Tadie, Saint Mary's University Philosophy Professor

This course will focus on the conservation ethic and environmental achievements of Aldo Leopold, one of the most famous environmental pioneers of the 20th century. Participants will read and discuss Leopold's, *A Sand County Almanac*, view the documentary, "Greenfire," and engage in a full afternoon field trip to a local prairie and watershed that illustrates Leopold's influence. Note: Optional day field trip to the Leopold Center and Sand Hill Crane Foundation, Baraboo, WI (additional cost) on May 23rd.

Wednesdays, April 25, May 2, 9, 16; 1:00-3:00p.m.
Location TBA

SENIOR UNIVERSITY SPRING 2012

REGISTRATION FORM

Name _____

Address _____

City _____ State ____ Zip _____

Phone _____

Email _____

Please provide:

WSU Retiree ID# _____ OR

Senior University ID# _____ OR

Birth Date _____

Indicate which course fees are enclosed:

Leaving a Legacy: Writing a Journal - \$47.60

Ancient Creation Myths- \$40

Architectural Monuments- \$40

Aldo Leopold's Legacy - \$50*

(includes \$10 for May 16 field trip to Prairie Moon Nursery)

*Note: *A Sand County Almanac* required reading
Available at Amazon.com for \$6.17

Total Enclosed \$ _____

Indicate type of payment:

Check Cash

You may register online at: <http://winona.augusoft.net>

Return the registration form along with your check or cash to:

Winona State University
Retiree Center
P.O. Box 5838
Winona, MN 55987

Learning Club Calendar of Events – January – February, 2012

Date	Event	Location	Time
<i>January</i>			
10 – Tuesday	New Generation Foods	Winona County History Center	10 am
18 – Wednesday	Wonders of Turkey	Winona County History Center	10 am
18 – Wednesday	Storytelling Group	WSU Retiree Center	1 pm
19 – Thursday	Creating Children’s Books Around the World	Winona County History Center	10 am
23 – Monday	Julius Caesar: His Life, Achievements, and His Place in History	Winona County History Center	1 pm
24 - Tuesday	Mystery Book Club	Callista Court	10:30 am
<i>February</i>			
2 - Thursday	Energy Medicine	Winona County History Center	10 am
6 – Monday	OPEN HOUSE	Winona County History Center Wanek Hall	12:30-2:30 pm
9 –Thursday	Tour – Chapel of Saint Mary of the Angels	1155 W. Wabasha St Winona MN	1 pm
15 – Wednesday	Storytelling Group	WSU Retiree Center	1 pm
20 – Monday	American Music	Winona County History Center	1 pm
28 – Tuesday	Mystery Book Club	Callista Court	10:30 am



The Learning Club
Winona State University
Retiree Center
PO Box 5838
Winona, MN 55987