



Century College

Business Transfer Pathway A.S. + Associate of Arts A.A. to WSU Business Administration B.S.

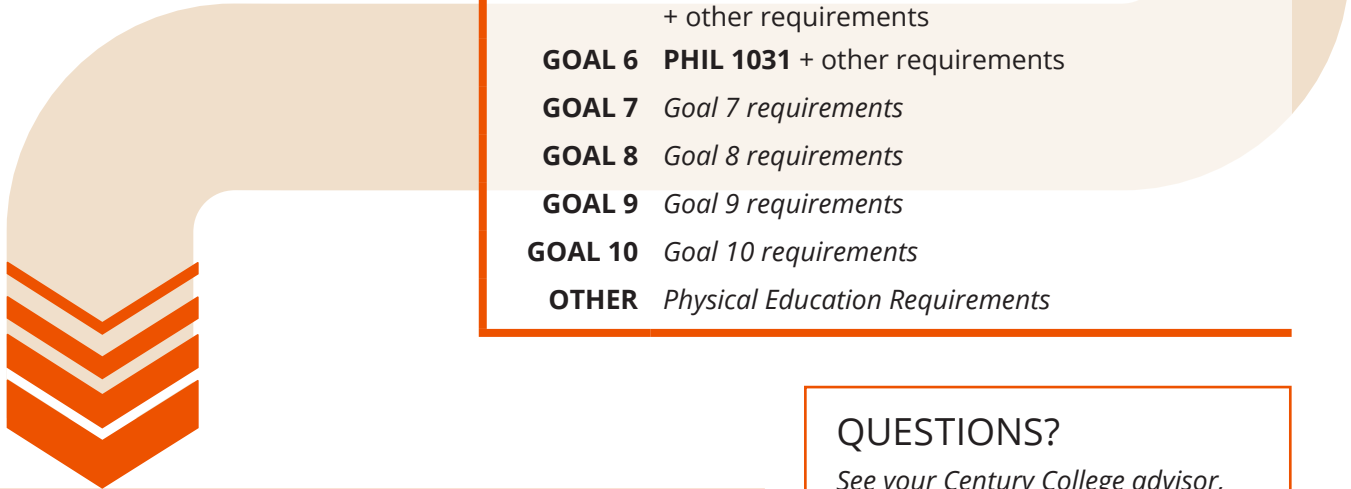
ONLINE DEGREE COMPLETION PROGRAM

ASSOCIATE OF ARTS PROGRAM REQUIREMENTS

TAKEN AT CC



- GOAL 1** ENGL 1020 or ENGL 1021
ENGL 1022, COMM 1021
- GOAL 3** *Goal 3 requirements*
- GOAL 4** MATH 1061
MATH 1025
- GOAL 5** ECON 1021
ECON 1023
+ other requirements
- GOAL 6** PHIL 1031 + other requirements
- GOAL 7** *Goal 7 requirements*
- GOAL 8** *Goal 8 requirements*
- GOAL 9** *Goal 9 requirements*
- GOAL 10** *Goal 10 requirements*
- OTHER** *Physical Education Requirements*



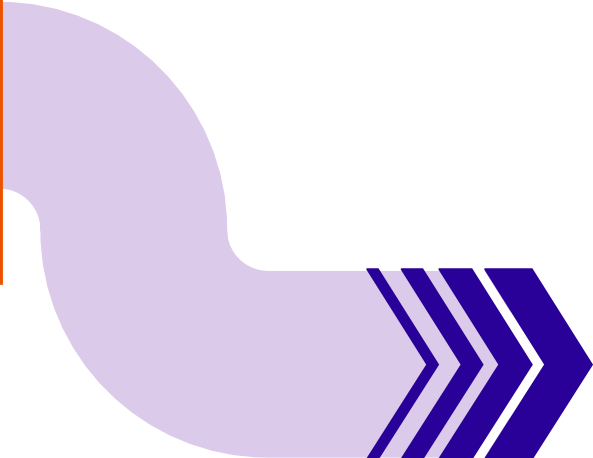
QUESTIONS?

*See your Century College advisor,
counselor, or business instructor.*

BUSINESS TRANSFER PATHWAY PROGRAM REQUIREMENTS

TAKEN AT CC *(2.5 GPA Required for WSU College of Business Entry)*

- **ACCT 2020** Financial Accounting
- **ACCT 2025** Managerial Accounting
- **BMGT 2030** Principles of Management
- **BMGT 2051** Legal Environment of Business
- **CSCI 1020** Intro to Personal Computers & Info Systems
- **MKTG 2050** Principles of Marketing
- **Career/Occupational electives** *(10 credits)*





TO GET STARTED

STEP 1

PLEASE APPLY FOR **ENTRY TO WSU**

winona.edu/admissions/undergraduate/apply.asp

STEP 2

CHOOSE THE **ROCHESTER CAMPUS**, NOT WINONA

This is very important because it indicates you are looking for the online completion program that is only offered through our Rochester campus.

STEP 3

CHOOSE THE **"ON CAMPUS"** OPTION

All classes are online, but this completion program is part of an on-campus major, so you must select this option.

STEP 4

CHOOSE THE **BUSINESS ADMINISTRATION CANDIDATE** OPTION

STEP 5

SEND ALL TRANSCRIPTS TO WSU

Instructions on how to send transcripts are on the application. If you have questions, please contact WSU admissions at 800.DIALWSU ext 5100 (507-457-5100)

STEP 6

WAIT FOR WSU TO CONTACT YOU

The WSU Admissions office will let you know that you have been admitted, this should take about 2 weeks.

STEP 7

APPLY TO WSU COLLEGE OF BUSINESS

Apply for provisional admission at www.winona.edu/business/admission.asp

GAIN ENTRY INTO THE PROGRAM


Gain entry into the Bachelor of Science in Business Administration online degree completion program cohort and meet with the advisor.

WSU BUSA PROGRAM REQUIREMENTS

TAKEN AT WSU

This program can be part-time or full-time.

* Has Prerequisites

- 
- FALL 1** • **MGMT 334** Operations Management
 - **MGMT 317** Human Resource Management
 - **MGMT 345** International Business

- SPRING 1** • **MGMT 325** Organizational Dynamics
- **FIN 360** Corporate Finance
- **BUSA 311** Business Law II

- FALL 2** • **BUSA 321** Applied Business Ethics (*elective*)
- **BUSA 351** Employment Law (*elective*)
- **MGMT 495** Strategic Management*

- SPRING 2** • **MIS 362** Management of Information Systems
- **MGMT 427** Human Resource Development (*elective*)
- **or MGMT 475** International Management* (*elective*)
- **MGMT 464** Project Management



Business Administration PROGRAM OVERVIEW

wsu.mn/business-administration-online



CONTACT

College of Business Advisor
collegeofbusiness@winona.edu



GRADUATE!