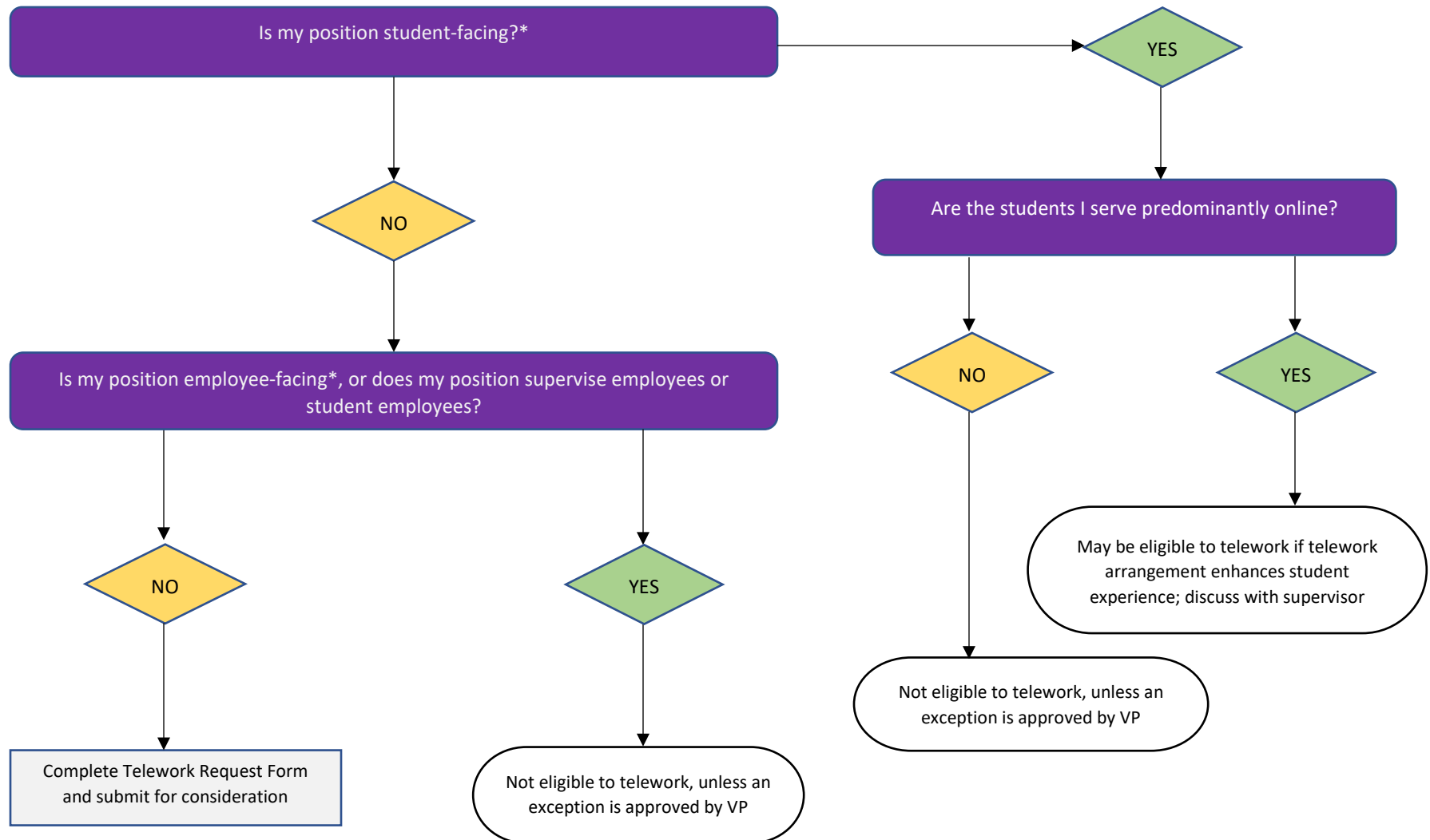


Decision Guidelines: Am I Eligible for Telework?

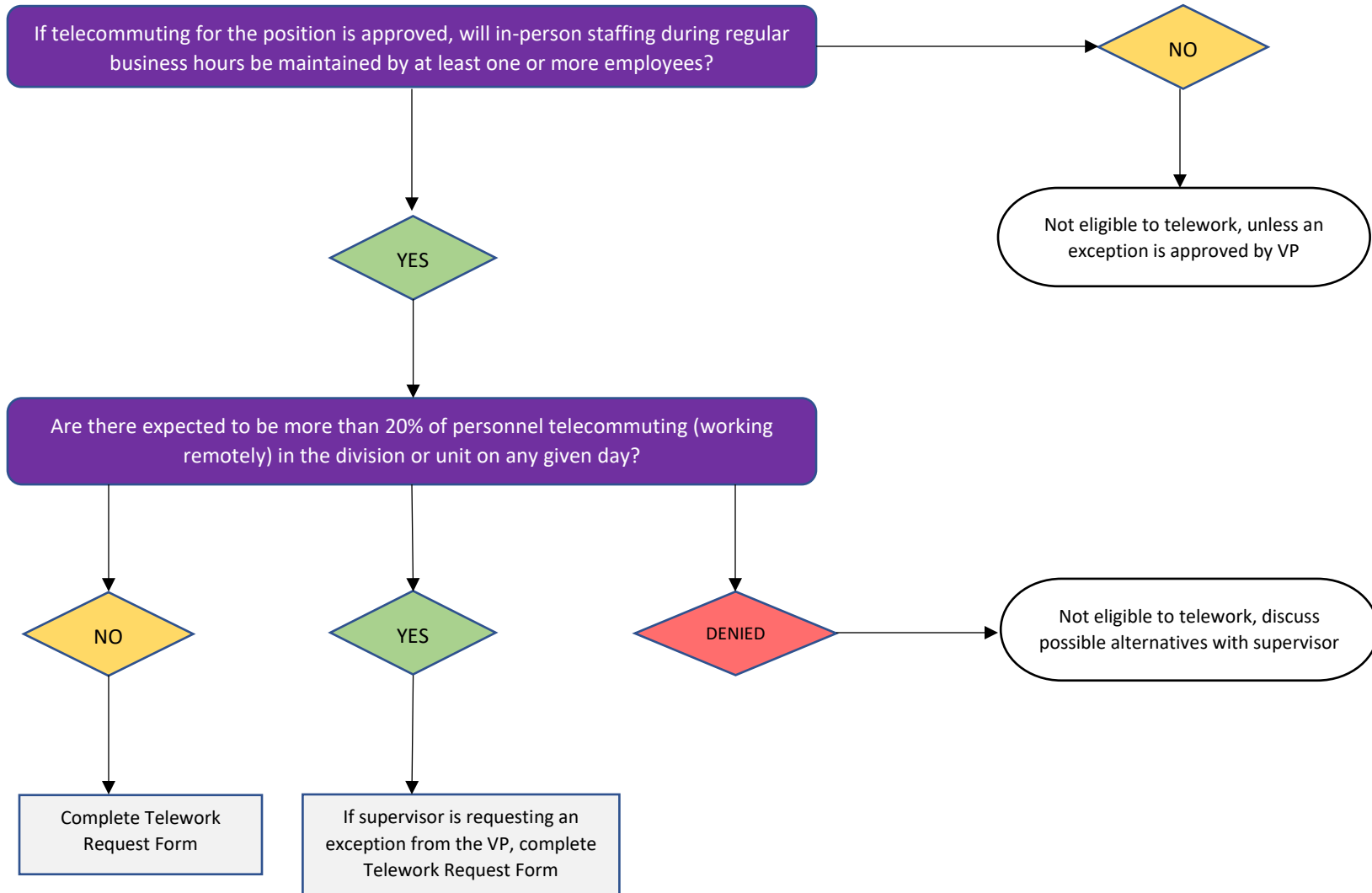
EMPLOYEE ASSESSMENT (Position Level)



*A student-facing or employee-facing position includes job activities that involve direct interaction or contact with students or employees on a regular basis across channels of communication. Often a first point of contact for campus interaction. May also include positions providing direct services for which leveraging technology would have an unequal or hampered service experience.

Decision Guidelines: Am I Eligible for Telework?

SUPERVISOR ASSESSMENT (Department or Unit Level)



Decision Guidelines: Am I Eligible for Telework?

